

Scott Wilson Scotland
Extracts from Various Documents
Board Structures
RT Hunter

This data has been abstracted from a variety of sources. Data from earlier years has been taken from the details recorded on letterheads of the various firms. In some cases there can be no guarantee that the details were correct for the whole of any financial year as the data is taken from a limited sample of letterheads. This data is shown in *italics*.

Where available, data has been abstracted from statutory accounts (some long versions and others short versions). In some cases changes during the year have also been recorded. The data should be accurate at the end of the relevant financial year. This data is shown in ordinary text style (or in a pdf copy of ordinary text). In a limited number of cases both Partnership and Limited Company data was available for a given year.

Diagrams show data taken from Business Plans. Such data was typically prepared just before or after the start of a financial year and this explains discrepancies between this data and data taken from statutory accounts.

Some back up data was sourced from Board Minutes.

Comments are shown in blue text.

FY 1973 – 1974 SWKC(S)

Directors: *R Hodgen*
 H Grace
 FM Bowen
 CG Sang
 JKM Henry
 GMJ Williams
 FW Spencer
 AS McDermott

R Hodgen resigned in April 1973 and JM Cullen, JM Breakey and CR Ford were appointed to the Board thereafter.

FY 1974 – 1975: SWKC(S)

Directors: *JM Cullen*
 JM Breakey
 H Grace
 FM Bowen
 CG Sang
 JKM Henry
 GMJ Williams
 FW Spencer
 AS McDermott

CR Ford resigned in December 1973

FY 1975 – 1976 SWKC(S)

Directors: JM Cullen
JM Breakey
H Grace
CG Sang
JKM Henry
GMJ Williams
FW Spencer
AS McDermott

FY 1976 – 1977 SWKC(S)

Directors: JM Cullen
JM Breakey
H Grace
JKM Henry
GMJ Williams
FW Spencer
AS McDermott

FY 1977 – 1978 SWKC(S)

Directors: JM Cullen
JM Breakey
GMJ Williams
FW Spencer
AS McDermott

FY 1978 – 1979 SWKC(S)

Directors: JM Cullen
JM Breakey
GMJ Williams
FW Spencer
AS McDermott

FY 1979 – 1980 SWKC(S)

Directors: JM Cullen
JM Breakey
GMJ Williams
FW Spencer
AS McDermott

FY 1980 – 1981 SWKC(S); SWKP(S)

Directors: JM Cullen
JM Breakey
GMJ Williams

Partners: JM Cullen
GMJ Williams

*SG Elliot
JJ Gandy
SWK International*

At some stage the Company changed to a Partnership either in 1979 or 1980.

FY 1981 – 1982 SWKP(S)

*Partners: JM Cullen
GMJ Williams
SG Elliot
JJ Gandy
R McGowan
SWK International*

FY 1982 – 1983 SWKP(S)

*Partners: JM Cullen
GMJ Williams
SG Elliot
JJ Gandy
R McGowan
SWK International*

FY 1983 – 1984 SWKP(S)

*Partners: R McGowan
JM Cullen
GMJ Williams
SG Elliot
SWK International*

FY 1984 – 1985 SWKP(S)

*Partners: R McGowan
JM Cullen
GMJ Williams
SG Elliot
SWK International*

FY 1985 – 1986 SWKP(S)

*Partners: R McGowan
GMJ Williams
KW Innes
SG Elliot
SWK International*

FY 1986 – 1987 SWKP(S)

*Partners: R McGowan
GMJ Williams*

*KW Innes
SG Elliot
SWK International*

FY 1987 – 1988 SWKP(S)

*Partners: R McGowan
JP McCafferty
H Blackwood
GMJ Williams
KW Innes
SG Elliot
SWK International*

FY 1988 – 1989 SWKP(S)

*Partners: R McGowan
JP McCafferty
H Blackwood
KW Innes
PD Vulliamy
RJ Osborn
SWK International*

FY 1989 – 1990 SWKP(S)

*Partners: R McGowan
JP McCafferty
H Blackwood
KW Innes
PD Vulliamy
RJ Osborn
SWK International*

From about this time onwards the Company structure was resurrected as SWKC(S)L to carry out design and build projects which were seen as potentially high risk.

FY 1990 – 1991 SWKP(S)

*Partners: R McGowan
JP McCafferty
H Blackwood
KW Innes
PD Vulliamy
RJ Osborn
SWK International*

FY 1991 – 1992 SWKP(S)

*Partners: R McGowan
JP McCafferty
H Blackwood
KW Innes
PD Vulliamy
RJ Osborn*

SWK International
FY 1992 – 1993 SWKP(S)

No data available

FY 1993 – 1994 SWKP(S); SWKC(S)L

SWKP(S) Partners: KW Innes
 R McGowan
 RJ Osborn
 JP McCafferty
 H Blackwood
 SWKI

SWKC(S)L Directors:

DIRECTORS DURING THE YEAR

K. W. Innes
R. McGowan
J. P. McCafferty
H. Blackwood
R. T. Hunter

Although RT Hunter became a salaried Partner in May 1992, he would not appear as a Partner in the annual Accounts until becoming a full Partner in 1994; however, he was appointed as a Director of the Company

FY 1994 – 1995 SWKP(S); SWKC(S)L

SWKP(S) Partners: KW Innes
 R McGowan
 RJ Osborn
 JP McCafferty
 H Blackwood
 RT Hunter
 SWK International

SWKC(S)L Directors:

DIRECTORS DURING THE YEAR

K. W. Innes (resigned 30 April 1995)
R. McGowan
J. P. McCafferty
H. Blackwood
R. T. Hunter

FY 1995 -1996 SWKC(S)L

The directors as at 30 April 1996 were:

R McGowan
J P McCafferty
H Blackwood
R T Hunter

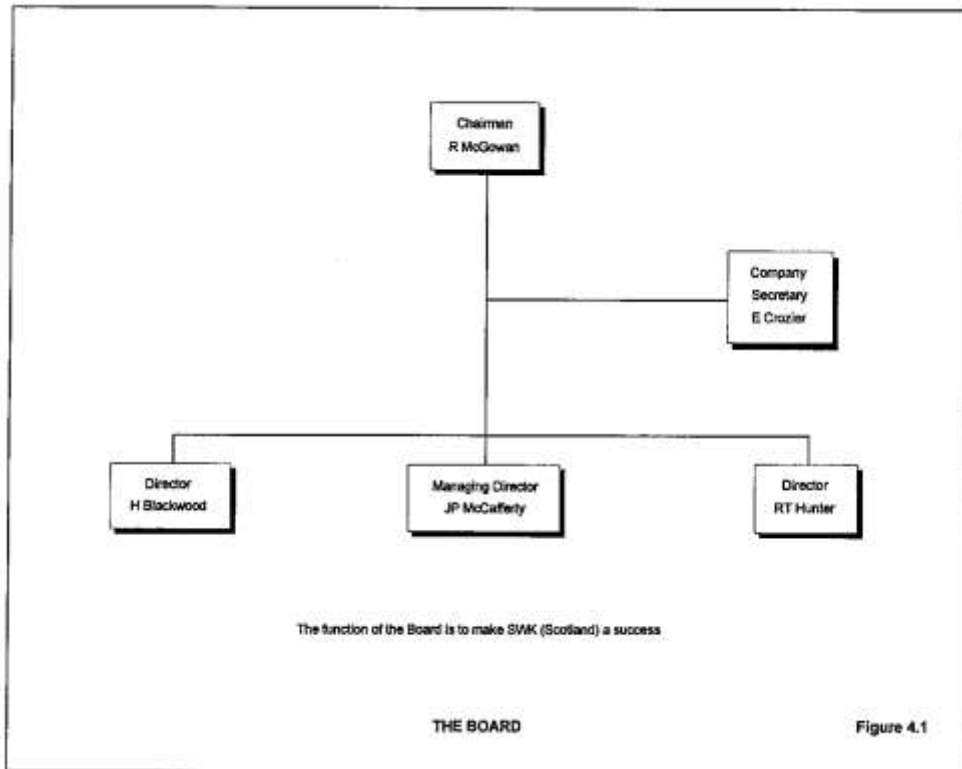
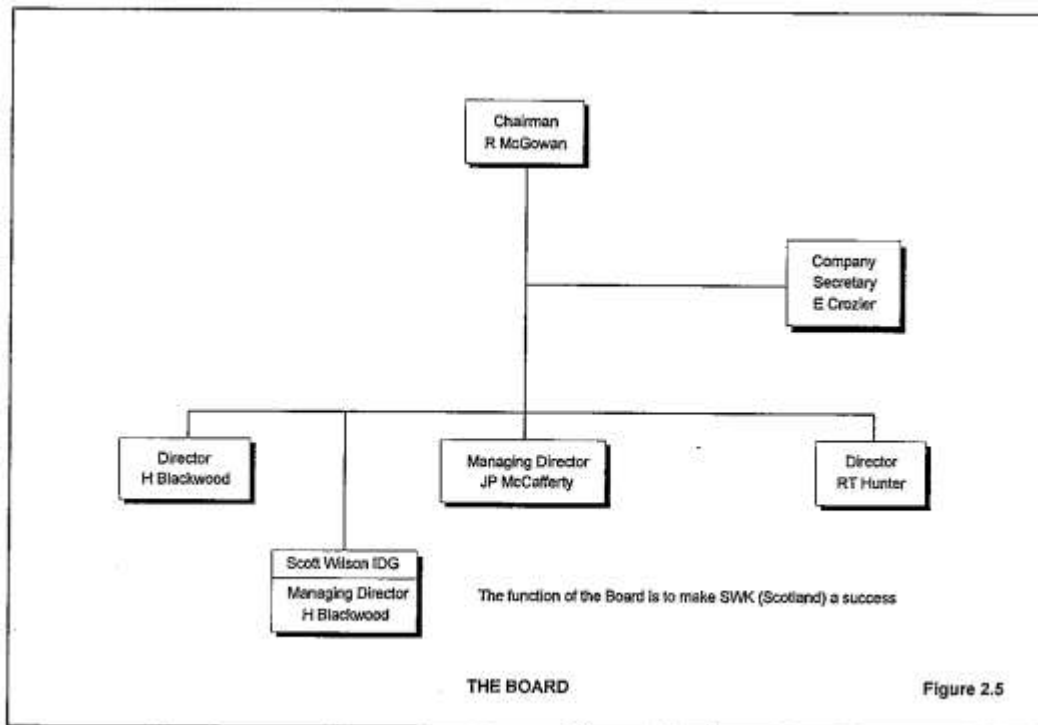


Figure 4.1

FY 1996-1997 SWKC(S)L

The directors as at 30 April 1997 were:

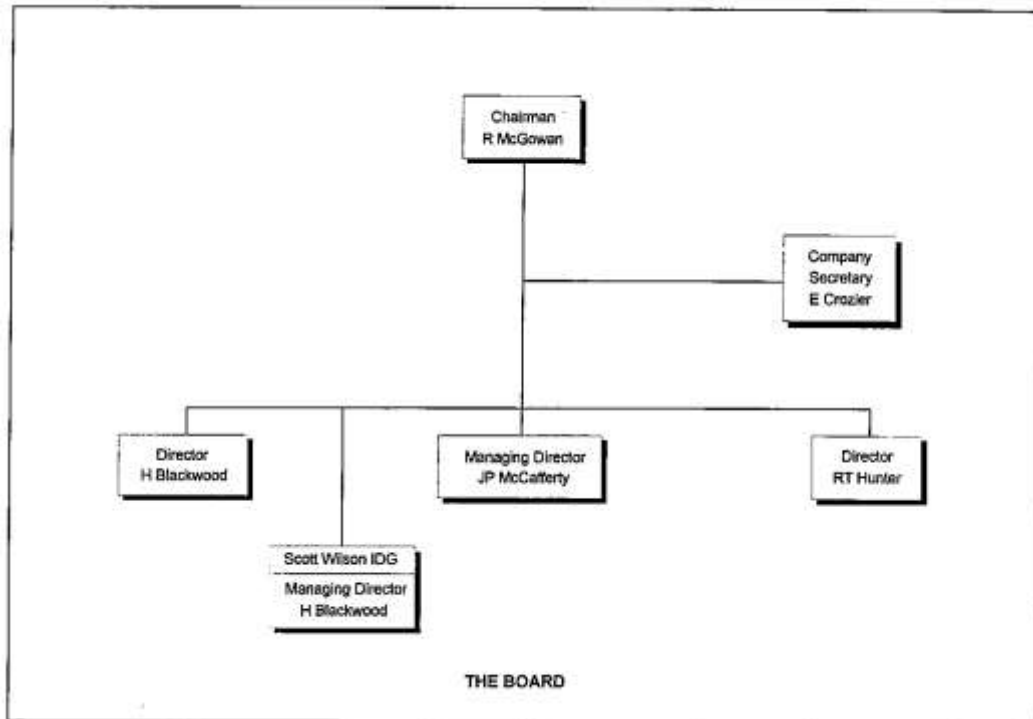
R McGowan
J P McCafferty
H Blackwood
R T Hunter



FY 1997-1998 SWSL

The directors as at 30 April 1998 were:

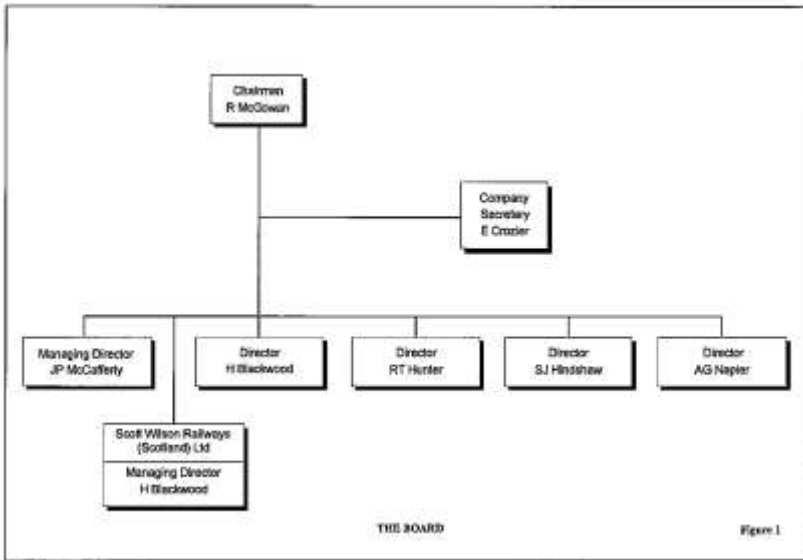
R McGowan
 J P McCafferty
 H Blackwood
 R T Hunter
 A Napier (appointed 1 July 1997)
 S Hindshaw (appointed 1 July 1997)



FY 1998-1999 SWSL

The directors as at 30 April 1999, all of whom served throughout the year, were:

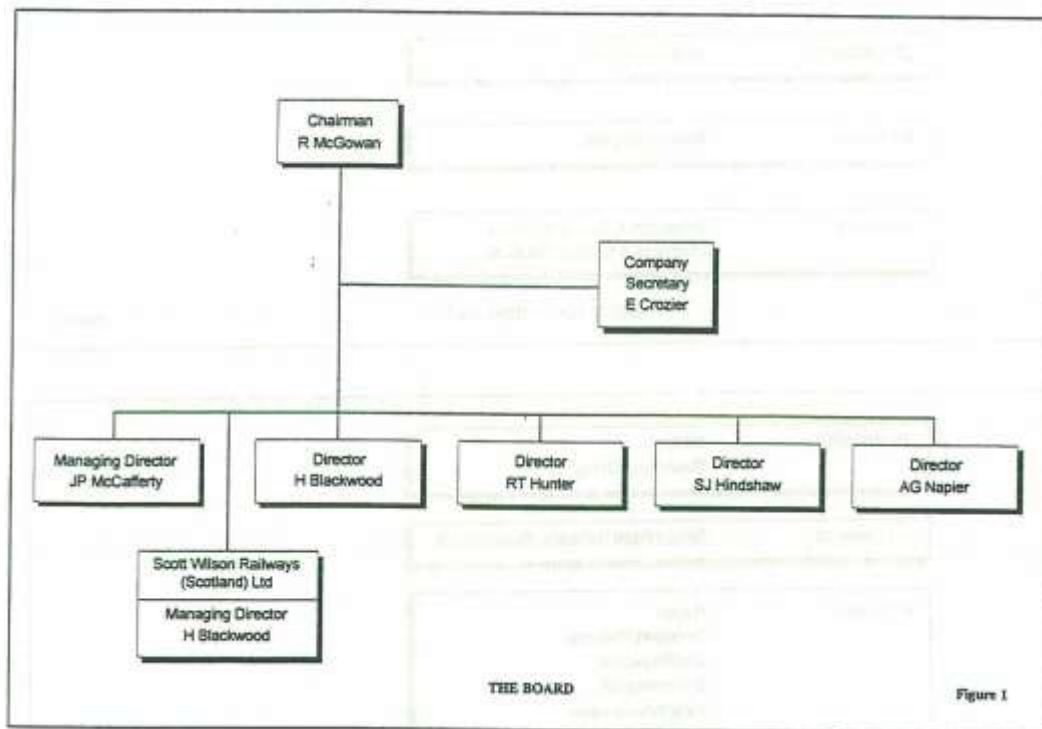
R McGowan
J P McCafferty
H Blackwood
R T Hunter
A Napier
S Hindshaw



FY 1999-2000 SWSL

DIRECTORS

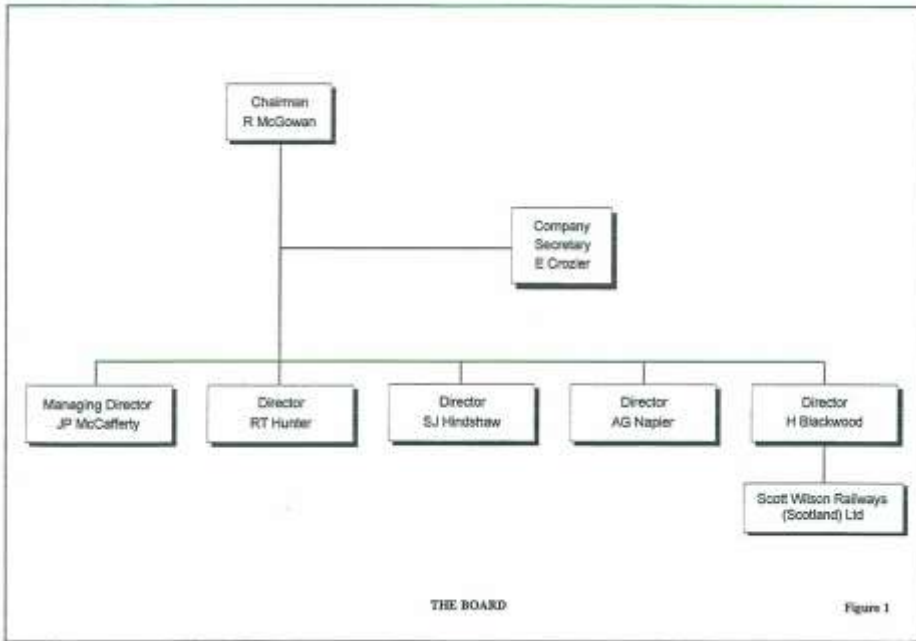
R McGowan
 JP McCafferty
 H Blackwood
 RT Hunter
 A Napier
 S Hindshaw



FY 2000-2001 SWSL

DIRECTORS

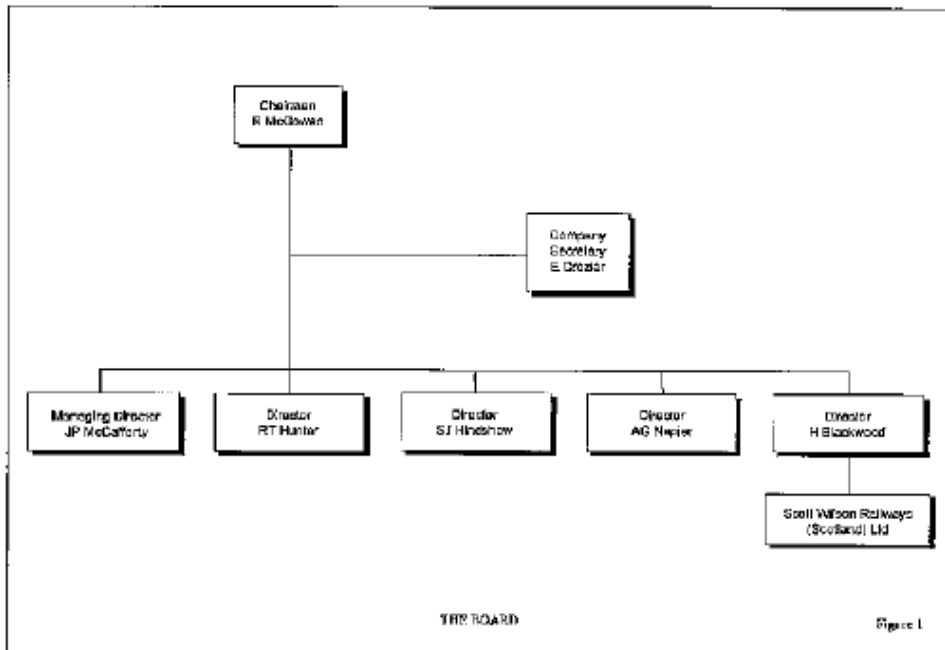
R McGowan
 JP McCafferty
 H Blackwood
 RT Hunter
 AG Napier
 SJ Hindshaw



FY 2001 – 2002 SWSL

DIRECTORS

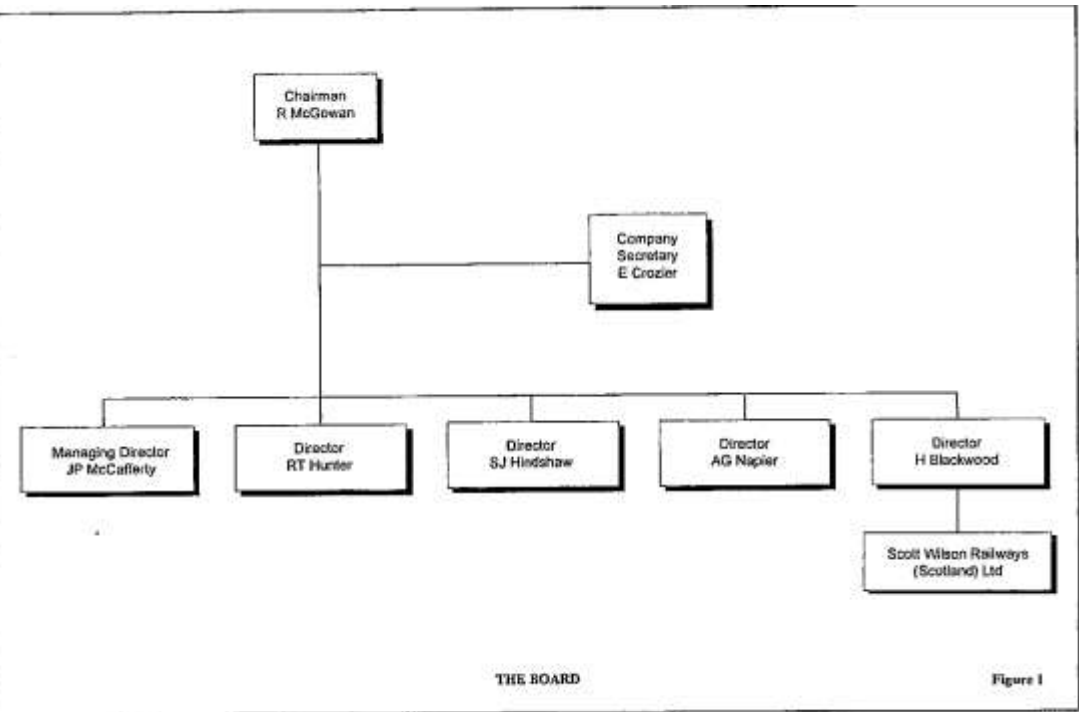
JP McCafferty
 H Blackwood
 RT Hunter
 AG Napier
 SJ Hindshaw



FY 2002 – 2003 SWSL

DIRECTORS

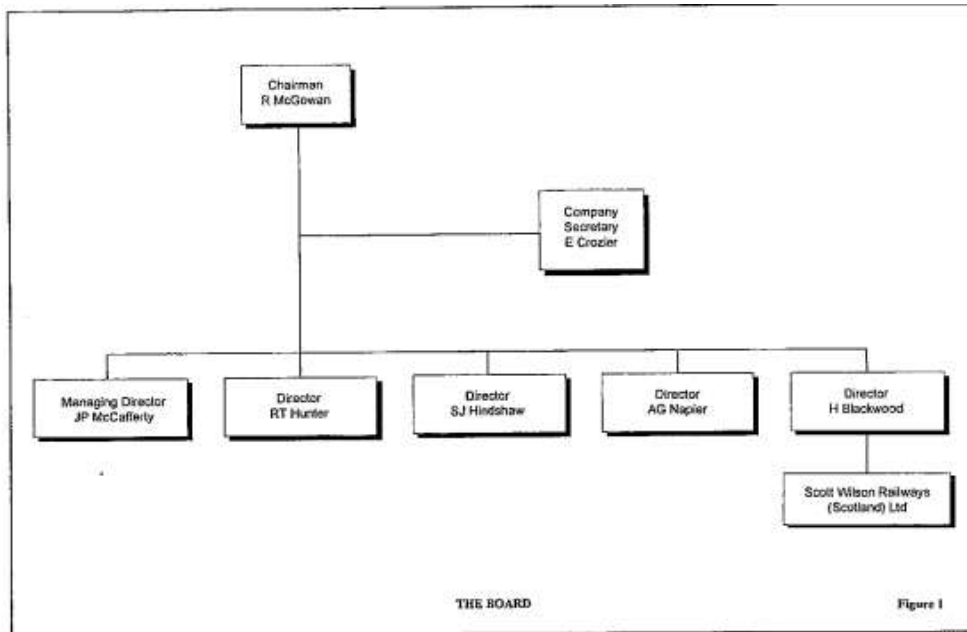
JP McCafferty
H Blackwood
RT Hunter
AG Napier
SJ Hindshaw



FY 2003 – 2004 SWSL

DIRECTORS

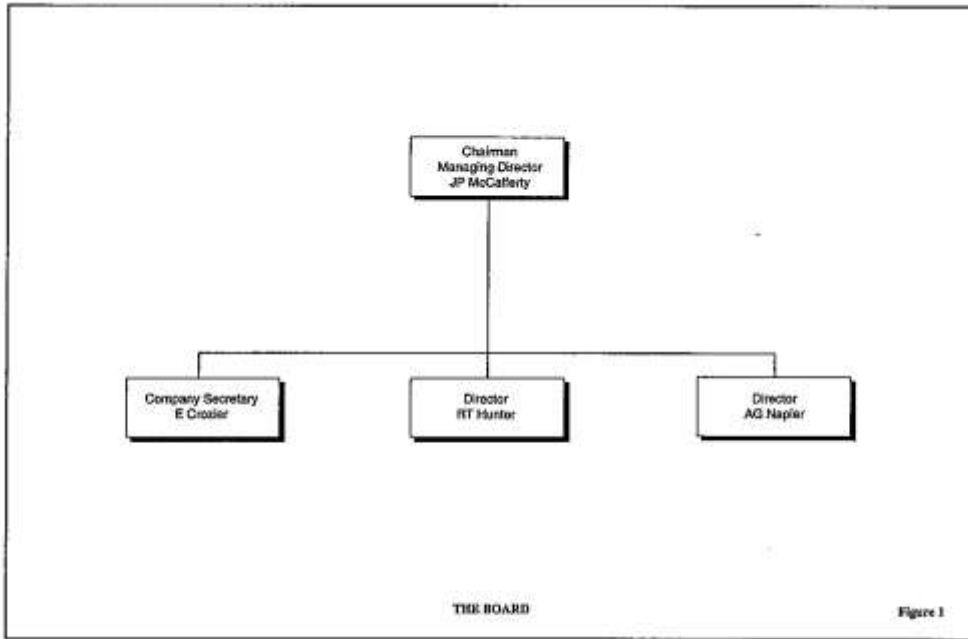
J P McCafferty
R T Hunter
A G Napier



FY 2004-2005 SWSL

DIRECTORS

J P McCafferty
R T Hunter
A G Napier
A G Frew

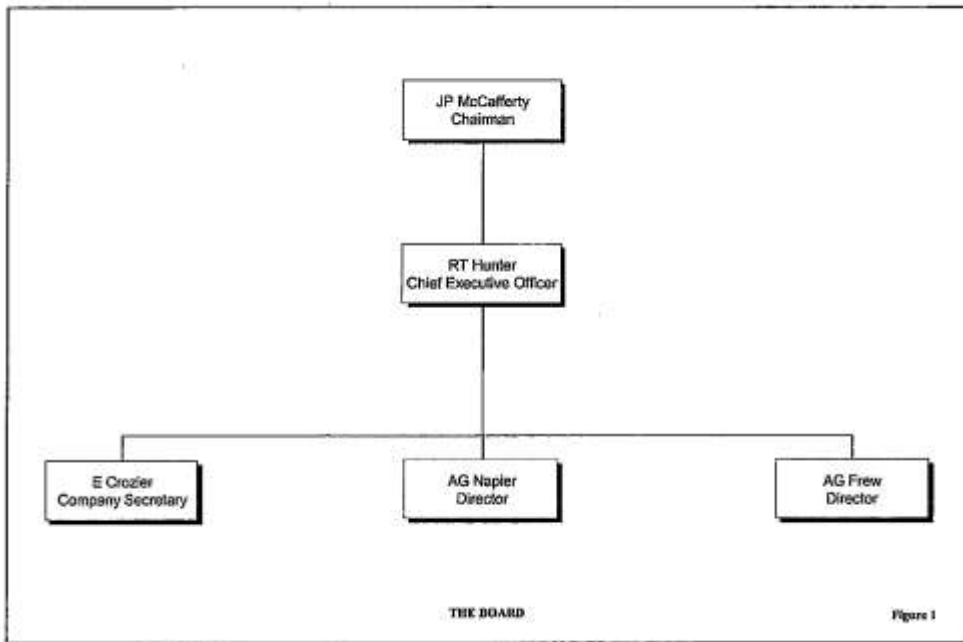


AG Frew was appointed a Director on 1 July 2005

FY 2005 – 2006 SWSL

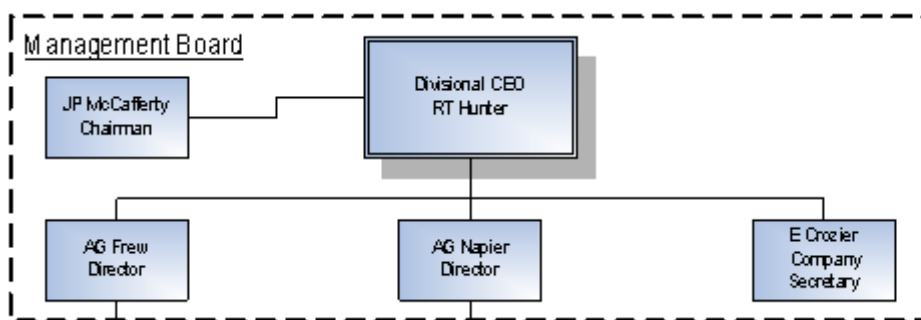
DIRECTORS

H Blackwood
S E Briggs
A G Frew
R T Hunter
J P McCafferty
A G Napier
R H Wall

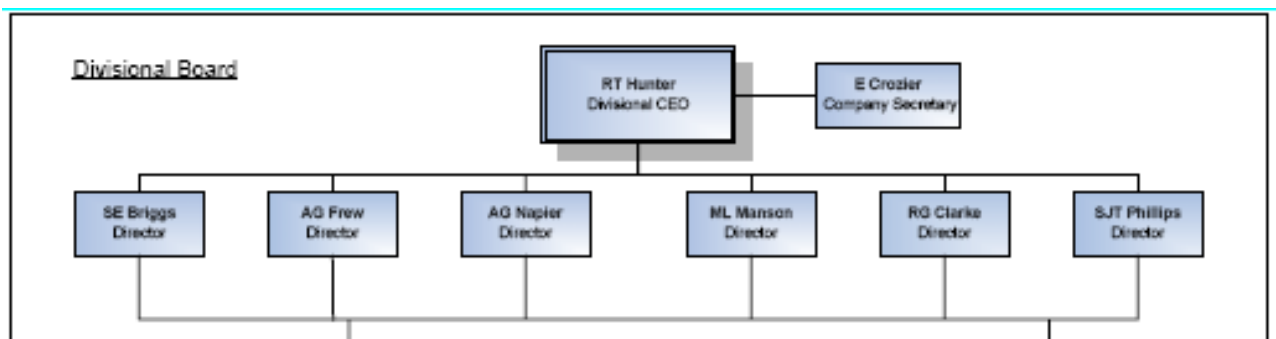


From May 2005 SWS operated in practice as a Division of the SW Group with its own formal accounts (SWSL)

FY 2006 – 2007 SWSL

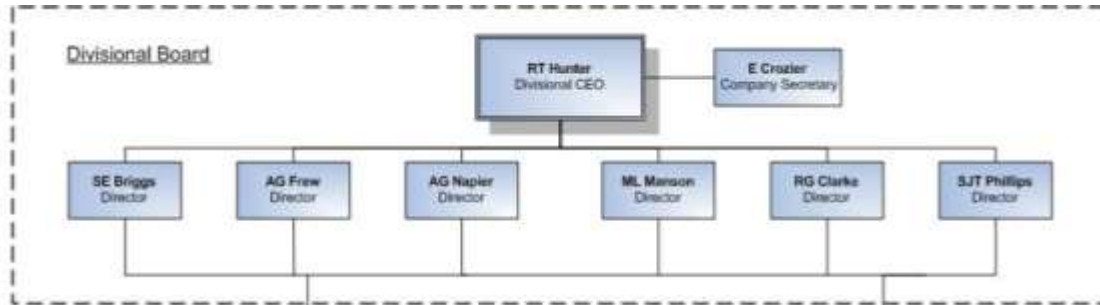


FY 2007 - 2008 SWSL



With the Acquisition of Ferguson McIlveen, Messrs Manson, Clarke and Phillips were appointed to the Board on 1 Nov 2007. However they were not appointed to the SWSL Board. SE Briggs was appointed to the SWSL Board on 1 Nov 2007.

FY 2008 – 2009 SWSL

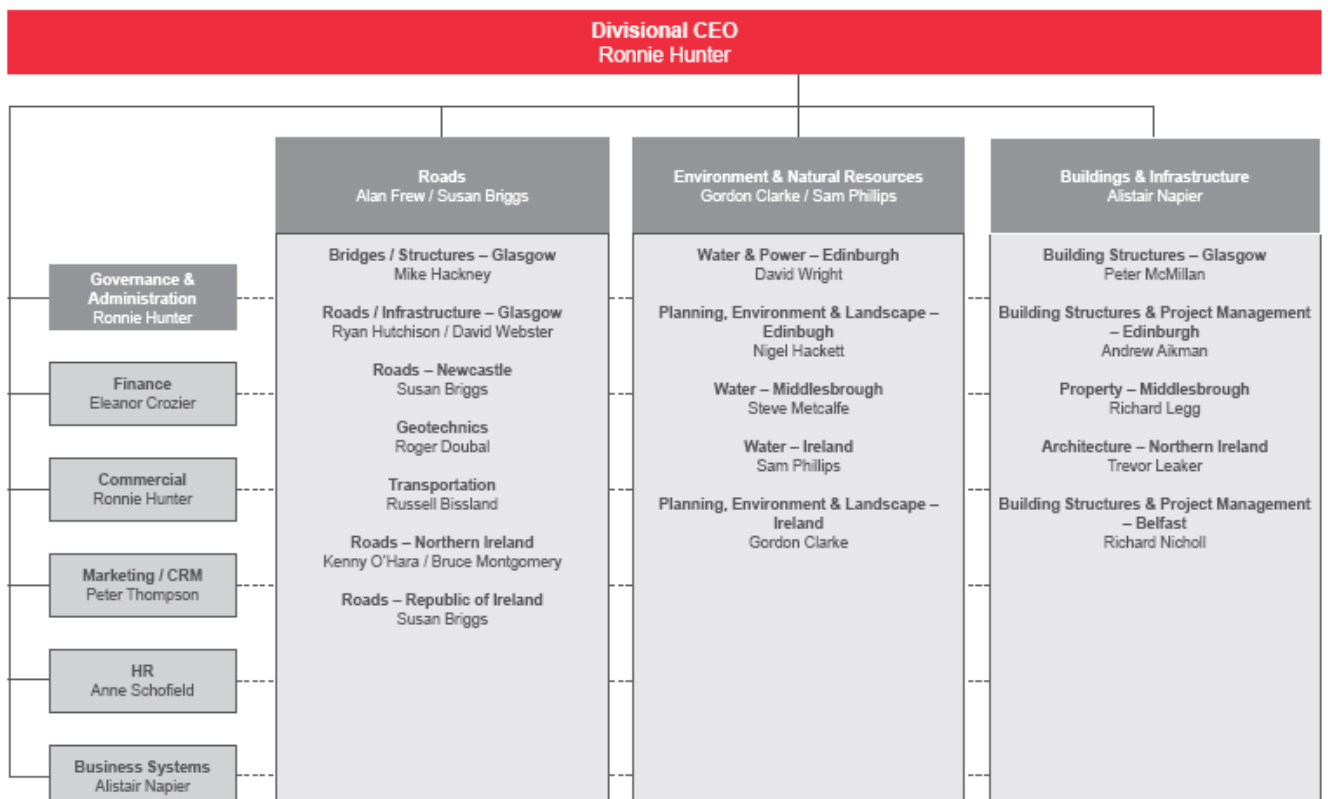


FY 2009 – 2010 SWSL

DIRECTORS

H Blackwood
R T Hunter
S E Briggs
A Frew
A Napier

Scotland & Ireland Organisation



The Business and Assets of SWSL were transferred to SWL on 1 June 2009 with the implementation of Single OpCo. On 1 Dec 2009 the Management of SWS was transferred to SWL as part of the sectorisation process. From 1 June 2009 SWSL became non-trading and no further data is available after the FY 2009-2010 accounts.